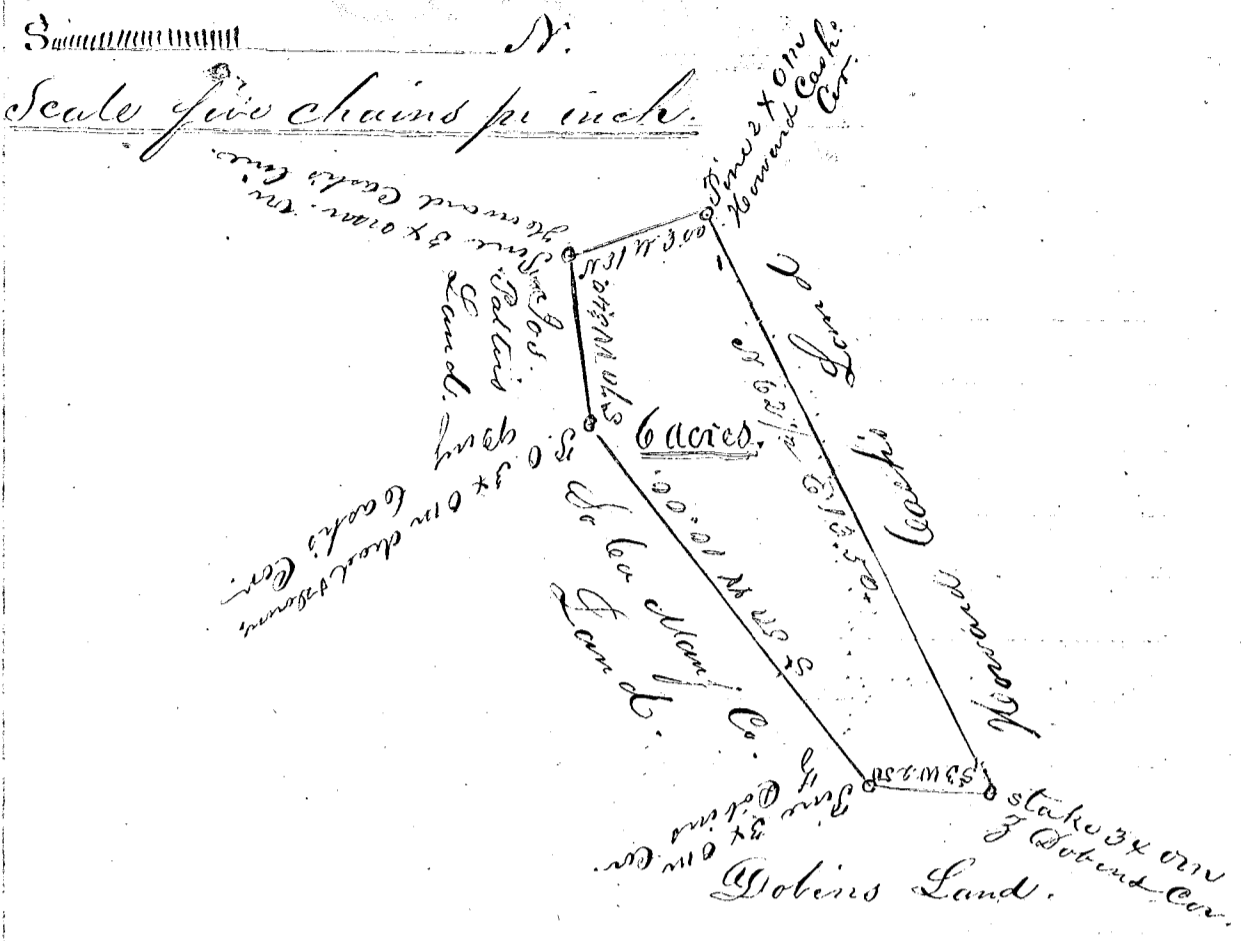


Benj. Cash's Plat.



South Carolina

Persuant to a warrant from J. P. Tolleson Commissioner of Locations in the District of Spartanburg, dated the 27th of January 1862. I have admeasured & laid out unto Benjamin Cash a Tract of Land containing six acres. Situated in said District bounded by lines running S. W. by the South Carolina Manufacturing Company. N. W. & N. E. by Howard Cash's Land, and hath such form & marks as the above Plat represents.

Surveyed the 27th day of January 1862.

John Epton
S. C.