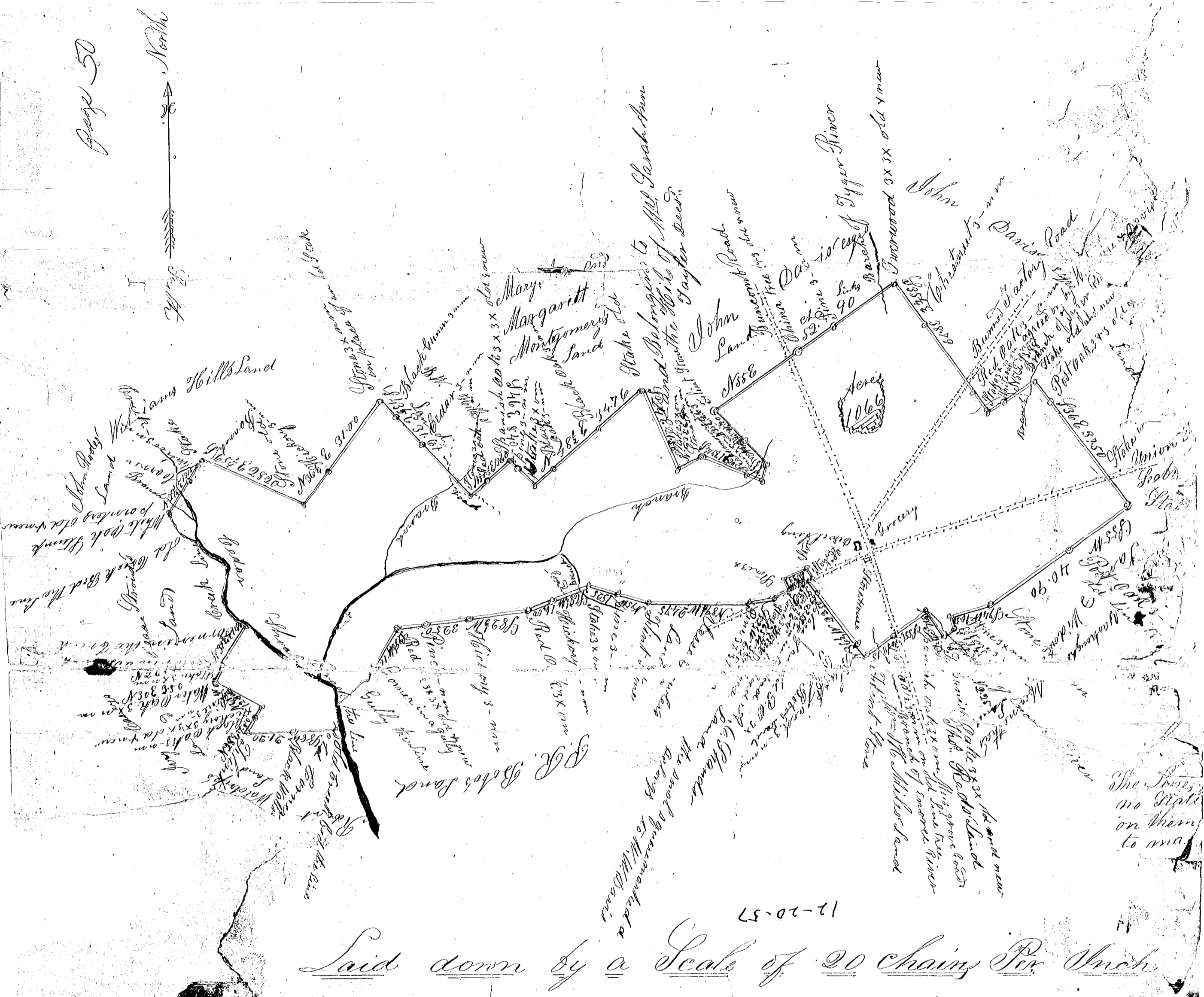
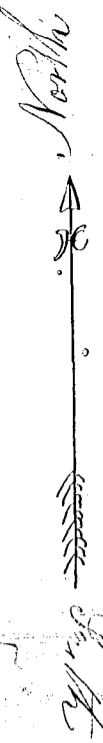


Page 50



The Jones
no State
on them
to ma

17-20-57

Laid down by a Scale of 20 chains Per Inch

South Carolina

Pursuant to a warrant from J. B. Tolleson Esq. Commissioner of Locations for South Carolina District dated the second day of December AD 1858 I have admeasured and laid down for W. J. White a Tract of Land containing one thousand and sixty six Acres lying in Spartamburg District and State afore said on Branch Waters of Enoree and with such boundaries as written on the above Plat the above Lands have been granted to diferent Persons and this survey was made for the Purpose of obtaining new Grant and I do hereby Certify that the above Plat is a true presentation of the same with its marks and bounddaries as surveyed by me the 20th Day of December 1858

1858

W. W. Duckett P.S.

Henry Miles Chain }
James Lamb Carryer }